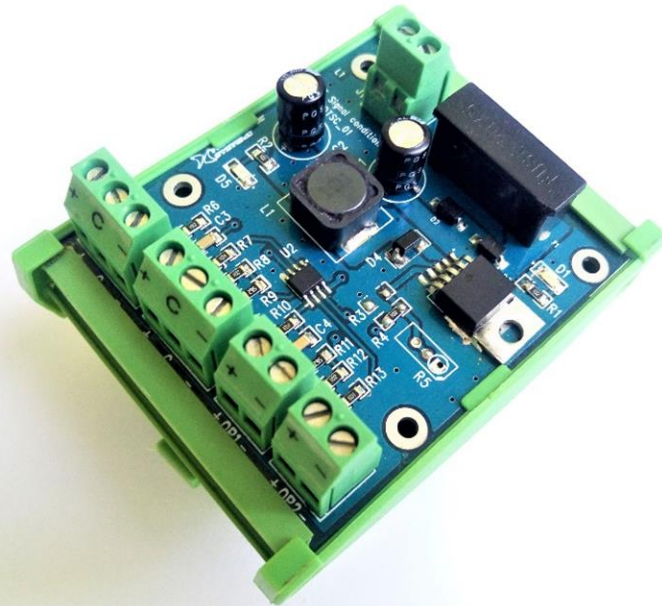


Signal Conditioner



❖ Key features:

- 2 Channel Signal conditioning card for Displacement transducer (Resistor type)
- DIN rail mount or PCB with holes for fixing
- Power Input: 15 to 30 VDC
- Voltage Out to transducer: 10VDC
- Voltage In from transducer: 0 - 10VDC
- Output: 0 to 10 VDC

❖ Application:

- Test Equipment, Industrial / Home Automation / Robotics

*Testamatic Systems Private Limited,
Bangalore.*

For orders, contact sales@testamatic.com